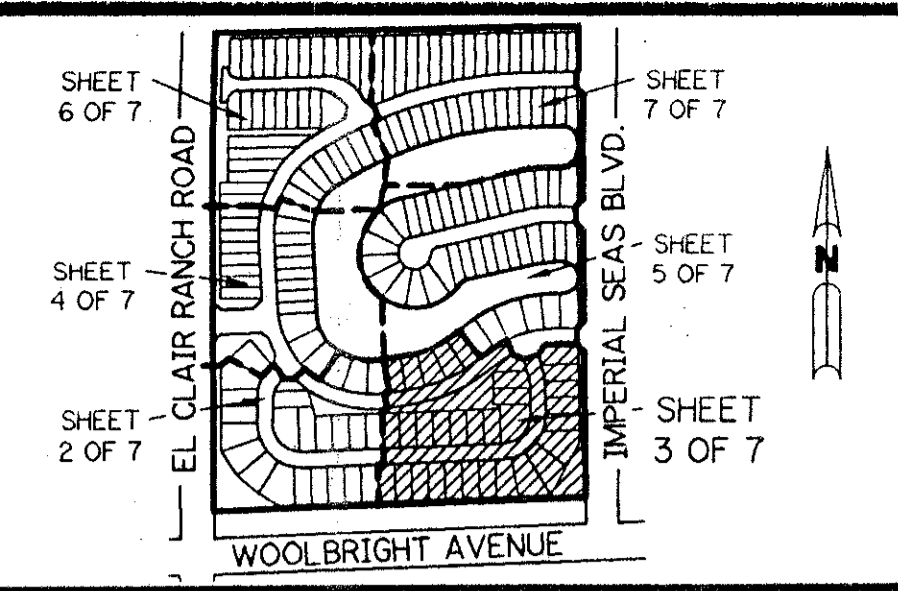


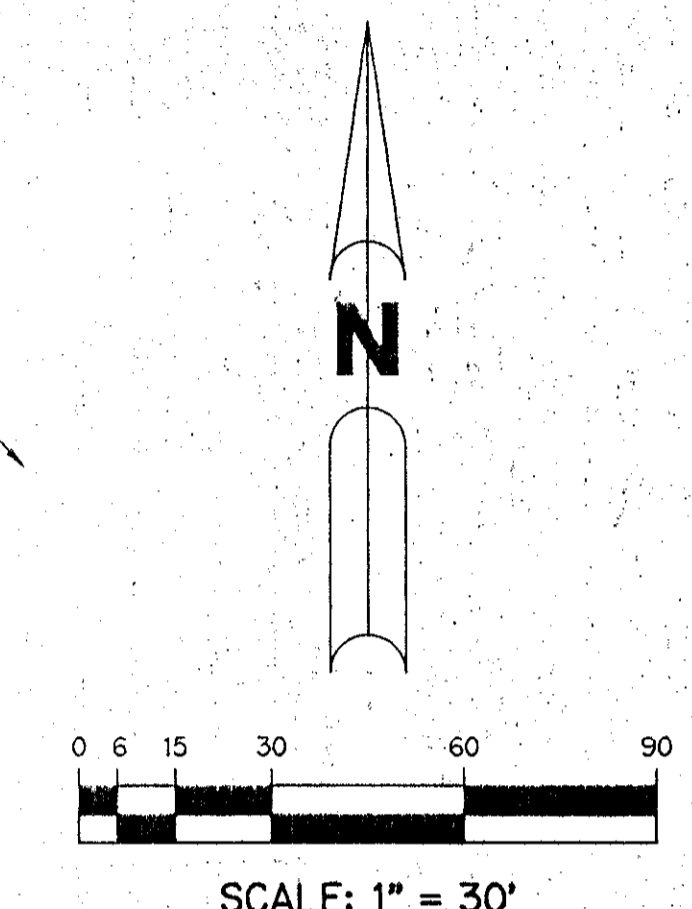
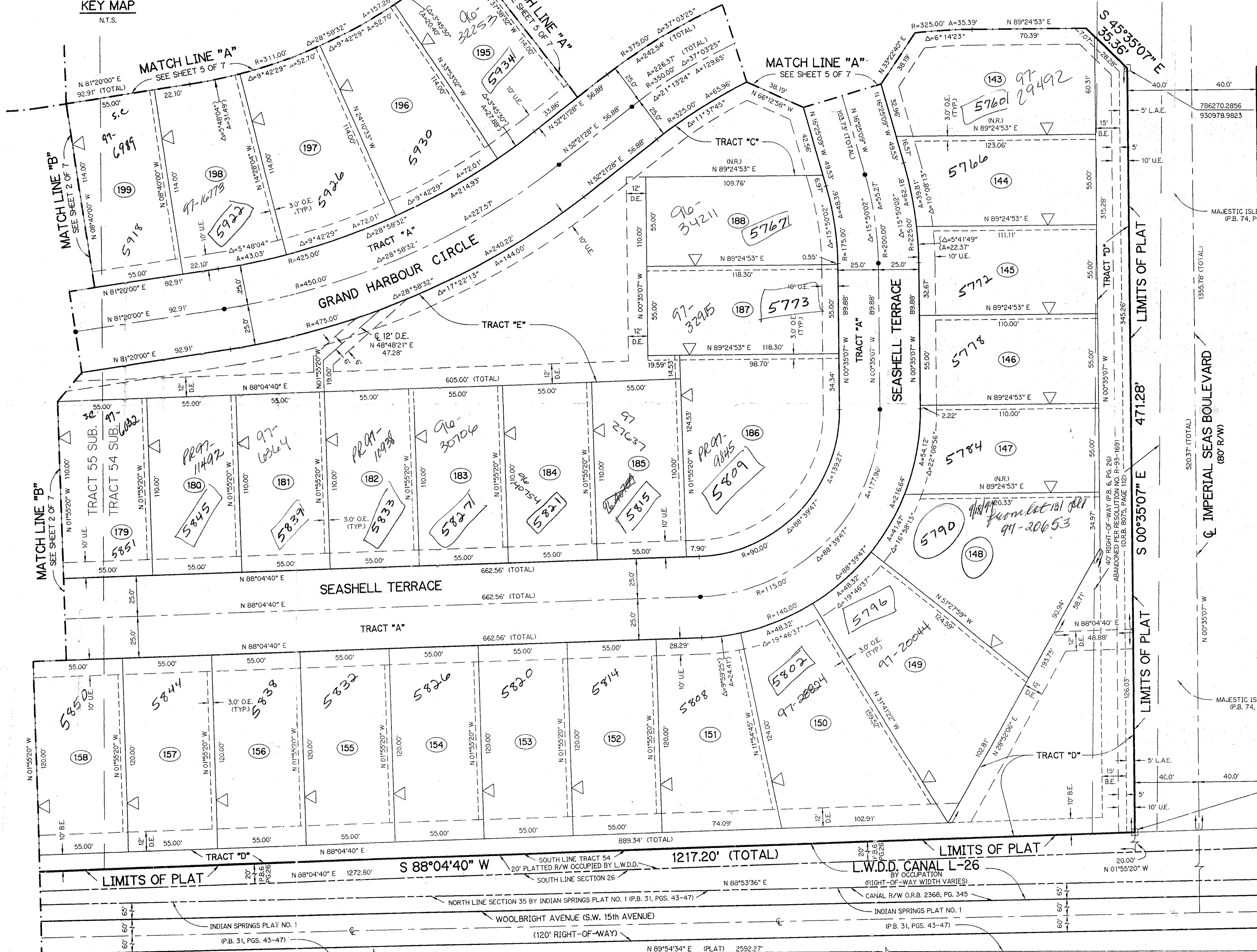
MAJESTIC ISLES - PLAT TWO

BEING A REPLAT OF A PORTION OF TRACTS 52, 53, 54, 55, 56, AND 57 AND ASSOCIATED ABANDONED RIGHT-OF-WAY ACCORDING TO THE PLAT OF THE SUBDIVISION OF SECTION 26, TOWNSHIP 45 SOUTH, RANGE 42 EAST, AS RECORDED IN PLAT BOOK 6, PAGE 26, PUBLIC RECORDS OF PALM BEACH COUNTY, FLORIDA. LYING IN SECTION 26, TOWNSHIP 45 SOUTH, RANGE 42 EAST.

SHEET 3 OF 7 MARCH, 1995



KEY MAP
N.T.S.



- LEGEND:**
- - FOUND PERMANENT REFERENCE MONUMENT, PLS #4213
 - - SET PERMANENT REFERENCE MONUMENT, PLS #4190
 - △ - PERMANENT CONTROL POINT, PLS #4190
 - A - ARC LENGTH
 - Δ - DELTA ANGLE
 - B.E. - BUFFER EASEMENT
 - D.E. - DRAINAGE EASEMENT
 - L.A.E. - LIMITED ACCESS EASEMENT
 - L.M.E. - LAKE MAINTENANCE EASEMENT
 - L.W.D.D. - LAKE WORTH DRAINAGE DISTRICT
 - N.R. - NOT RADIAL
 - N.T.S. - NOT TO SCALE
 - O.E. - OVERHANG EASEMENT
 - O.R.B. - OFFICIAL RECORD BOOK
 - P.B. - PLAT BOOK
 - PGS. - PAGES
 - P.S.M. - PROFESSIONAL SURVEYOR AND MAPPER
 - SUB. - SUBDIVISION OF SECTION 26 (P.B. 6, PG. 26)
 - R - RADIUS
 - R/W - RIGHT-OF-WAY
 - TYP. - TYPICAL
 - U.E. - UTILITY EASEMENT
 - △ - INDICATES ZERO LOT LINE
 - △ - INDICATES COMMON LOT LINE

PET 88-139B
No SCHOOL IMPACT FEE
5/3/3/K
TH
ZU

THIS INSTRUMENT PREPARED BY
WILBUR F. DIVINE, P.S.M. 4190, STATE OF FLORIDA
LAWSON, NOBLE AND ASSOCIATES, INC.
ENGINEERS PLANNERS SURVEYORS
WEST PALM BEACH, FLORIDA

0627-002

FND. P.B.CO. MON. "INDIAN"
BRASS DISK IN CONC. MON.
793212.8980
940247.7400

SUBDIVISION MAJESTIC ISLES
 BOOK 77 PAGE 24
 FLOOD ZONE B FLOOD MAP #1908
 QUAD 35 ZONING RS
 SE 88-139 ZIP CODE 33437
 PUD NAME MAJESTIC ISLES
 Recorded 6-20-94